



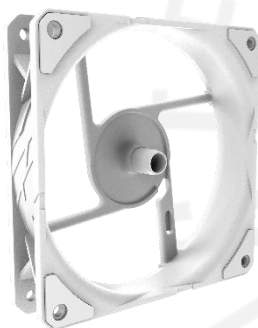
Cooler Master's high-performance SickLeFlow series is back and better than ever in the all-new SickLeFlow Edge 120 ARGB White Edition 3-Pack Fan Kit. With highlight features such as an enhanced fan blade, a newly redesigned frame, an updated loop-dynamic bearing system, and an ARGB Gen.2 Mini controller, the SickLeFlow Edge 3-Pack provides maximal performance and triple the power.

SICKLEFLOW EDGE WHITE EDITION 120 ARGB 3-PACK FAN KIT



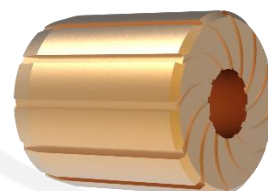
Enhanced fan blade

An improved fan blade provides higher fan speed, air pressure, and airflow while sticking to the same low noise level the SickLeFlow is known for.



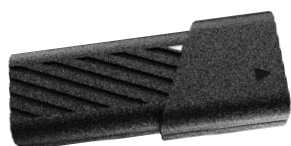
Redesigned frame

The SickLeFlow's signature lines are now included in the frame design to provide a more cohesive product design.



Improved bearing system

An enhanced loop dynamic bearing system keeps things running silently smooth.



A1 Mini LED controller

Control and customize your SickLeFlow Edge 120 Fan Kit's lighting with a compact, easy-to-use mini controller.

Enhanced fan blade - An improved fan blade provides higher fan speed, air pressure, and airflow while sticking to the same low noise level the SickleFlow is known for.

Redesigned frame - The SickleFlow's signature lines are now included in the frame design to provide a more cohesive product design.

Improved bearing system - An enhanced loop dynamic bearing system keeps things running silently smooth.

A1 Mini LED controller - Control and customize your SickleFlow Edge 120 Fan Kit's lighting with a compact, easy-to-use mini controller.

SPECIFICATIONS

Product Name		SickleFlow Edge 120 ARGB White Edition 3-Pack Fan Kit
Product Number		MFx-B2DW-253P2-R2
Exterior Color		White
Dimensions (L x W x H)		120 x 120 x 25 mm (4.7 x 4.7 x 1 inch)
Profiles		Addressable Gen 2 RGB
Fan	Speed	690 ~ 2500 ± 10% RPM
	Airflow	120m³/h (70.7CFM)
	Noise Level	32.8 dB(A)
	Pressure	3.61 mmH2O
	MTTF	> 160,000 hours
	Power Connector	4-Pin (PWM)
	Rated Voltage	12 VDC
	Rated Current	0.2 A
	Safety Current	0.3 A
	Power Consumption	2.4 W
	RGB Connector	3-Pin ARGB
	RGB Rated Voltage	5 VDC
	RGB Rated Current	0.21 A
	Weight	168 gm (0.37 lb)
Warranty		2 years

PACKING INFORMATION

EAN Code	4719512156513
UPC Code	884102128837
Net weight	0.551
Gross weight	0.671
Package dimension (L x W x H)	14 x 9 x 15.5 cm
Carton dimension (L x W x H)	44 x 28.5 x 35 cm
Unit / Pallet	18

Cont.	W/ Pallet	Carton / Pallet	W/O Pallet
20'	7200	40	N/A
40'	15120	40	N/A
40 HQ	18144	48	N/A